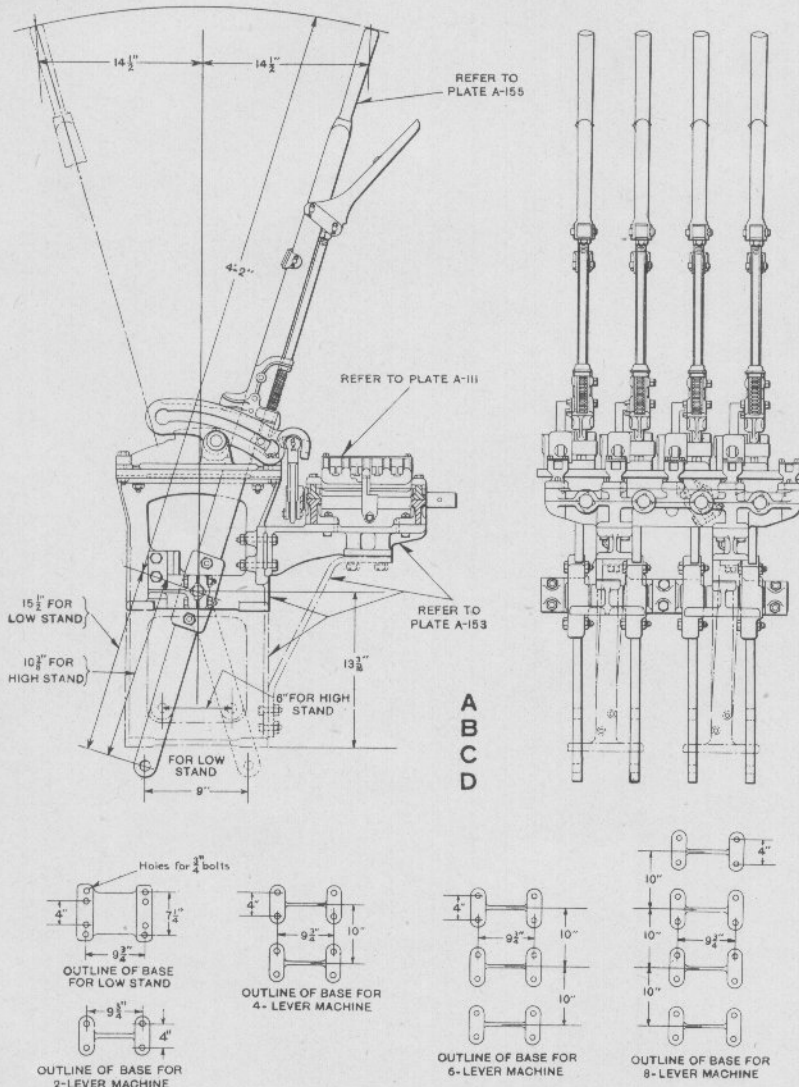


UNION SWITCH & SIGNAL COMPANY



THE DWARF INTERLOCKING MACHINE EQUIPPED WITH
SAXBY AND FARMER IMPROVED LOCKING

UNION SWITCH & SIGNAL COMPANY

THE DWARF INTERLOCKING MACHINE EQUIPPED WITH SAXBY AND FARMER IMPROVED LOCKING

The Dwarf Interlocking Machine has heretofore been confined to operating main line crossovers, outlying switches and station signals.

The machine illustrated on the opposite page is equipped with Saxby and Farmer Improved Locking and may be used with economy in place of any standard machine for horizontal leadout where the available space is limited and the lever stroke is not more than nine inches.

If locking is desired a signaled and numbered track plan should be furnished, drawn to a scale of not more than one hundred feet to the inch, showing the relation of the front of the machine to the track (the front of a machine is that part occupied by a man when operating the levers). It should also indicate clearly the functions of each lever, and the route or routes to be governed by each signal.

Orders must clearly state the number of levers.

If Electric Locks are required, orders must specify type referring to Section "G" Catalog (1911) for D. C. or Section "H" Catalog (1911) for A. C.

For Details of Machine see Plates A-153 and A-155.

Order by Plate, Piece, Reference and Abbreviated Description Given in Heavy Face Type and Instructions Given Above.

Drawing references are shown for convenience in checking material with shipping lists and invoices.

Piece	Ref.	Description	Drawing Reference
	A	2-Lever Dwarf Interlocking Machine, complete without locking (Low Stand).....	C-4950-26
	Aa	2-Lever Dwarf Interlocking Machine, complete with locking (Low Stand).....	C-4950-26
	Ab	2-Lever Dwarf Interlocking Machine, complete without locking (High Stand).....	C-4950-26
	Ac	2-Lever Dwarf Interlocking Machine, complete with locking (High Stand).....	C-4950-26
	B	4-Lever Dwarf Interlocking Machine, complete without locking (Low Stand).....	C-4950-20
	Ba	4-Lever Dwarf Interlocking Machine, complete with locking (Low Stand).....	C-4950-20
	Bb	4-Lever Dwarf Interlocking Machine, complete without locking (High Stand).....	C-4950-20
	Bc	4-Lever Dwarf Interlocking Machine, complete with locking (High Stand).....	C-4950-20
	C	6-Lever Dwarf Interlocking Machine, complete without locking (Low Stand).....	C-4950-20

Zachary C. Gillihan 2008

PLATE A-150

UNION SWITCH & SIGNAL COMPANY

THE DWARF INTERLOCKING MACHINE EQUIPPED WITH SAXBY AND FARMER IMPROVED LOCKING

(Continued)

Order by Plate, Piece, Reference and Abbreviated Description Given in
Heavy Face Type and Instructions Given Above.

Drawing references are shown for convenience in checking material with
shipping lists and invoices.

Piece	Ref.	Description	Drawing Reference
	Ca	6-Lever Dwarf Interlocking Machine, complete with locking (Low Stand).....	C-4950-20
	Cb	6-Lever Dwarf Interlocking Machine, complete with- out locking (High Stand).....	C-4950-20
	Cc	6-Lever Dwarf Interlocking Machine, complete with locking (High Stand).....	C-4950-20
	D	8-Lever Dwarf Interlocking Machine, complete with- out locking (Low Stand).....	C-4950-20
	Da	8-Lever Dwarf Interlocking Machine, complete with locking (Low Stand).....	C-4950-20
	Db	8-Lever Dwarf Interlocking Machine, complete with- out locking (High Stand).....	C-4950-20
	Dc	8-Lever Dwarf Interlocking Machine, complete with locking (High Stand).....	C-4950-20